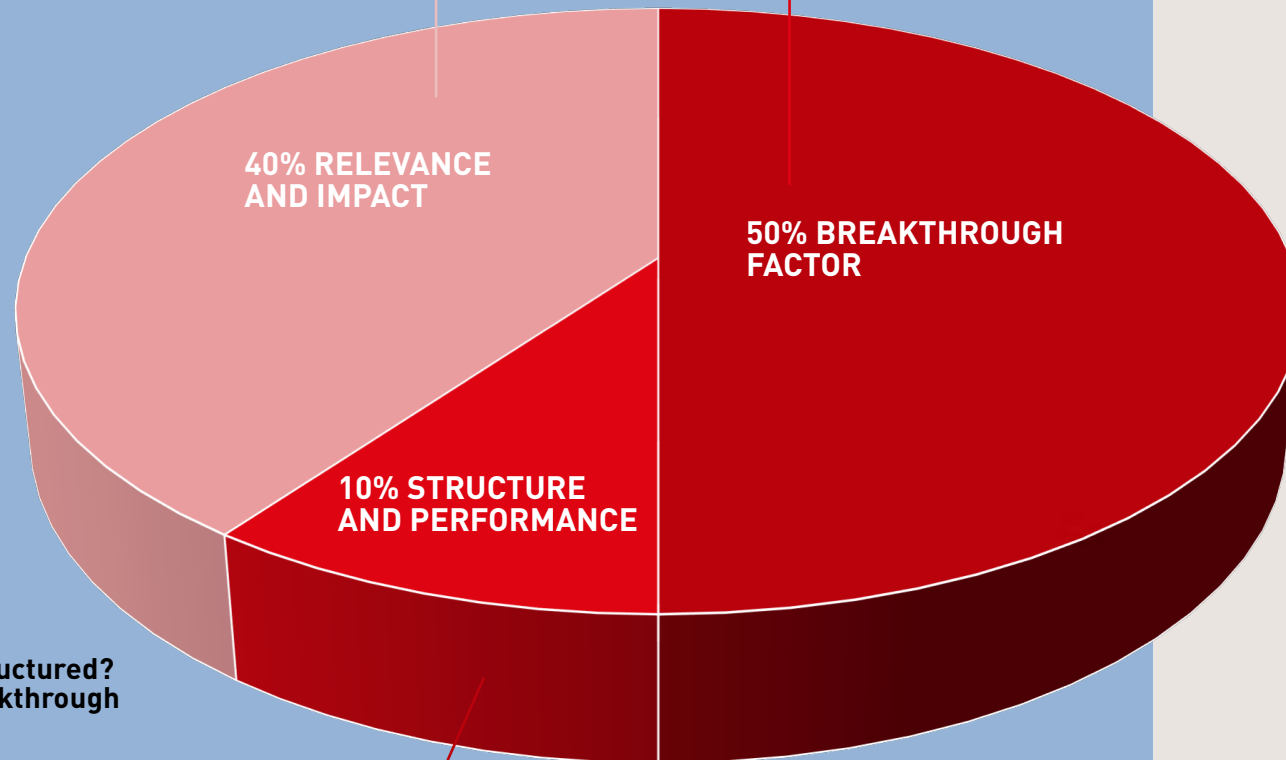


SCORING SYSTEM

Each presentation is evaluated on a scale from 0 – 5 (lowest to highest) based on three weighted criteria:

- Who is the target group?
- Does the idea affect a broad group or does it have a deep impact on a small group?
- Does the idea have short-term or long-term effects?

- Is the project original and does it have potential for innovation?
- Does it represent a groundbreaking idea, initiative or discovery?
- Could it trigger other innovation processes?



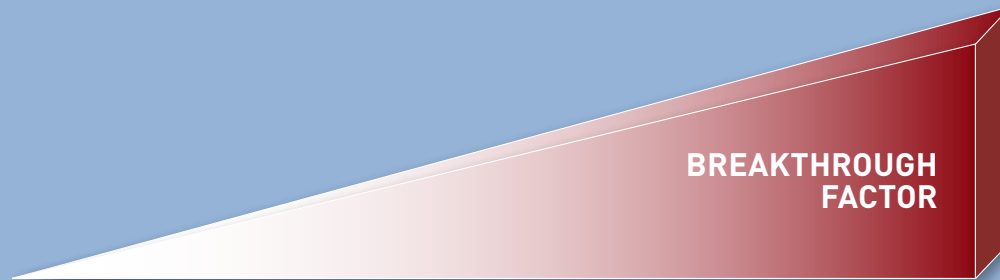
- Is the presentation well structured? Does it clearly explain breakthrough and impact?
- Does the candidate present a proof of concept / the feasibility of the project?
- Is the candidate able to explain the idea well?

SCORING SYSTEM

Each criterion is evaluated using a scale from 0 – 5 (lowest to highest).

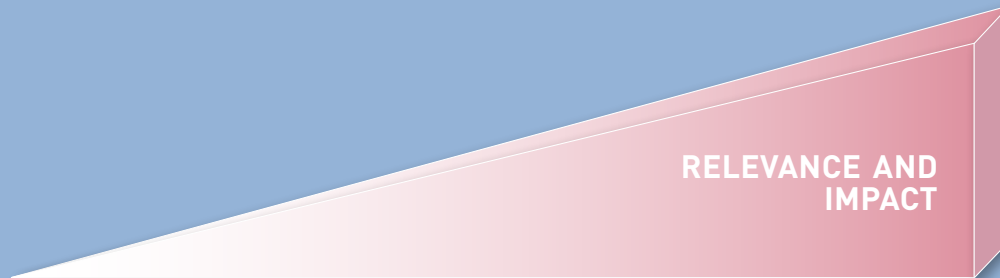


- Not original
- Not innovative
- Will not trigger other innovation processes



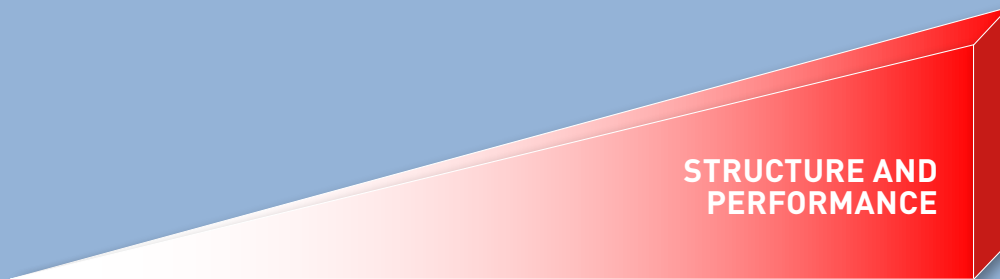
- Very original
- Very innovative
- Will strongly trigger other innovation processes

- Not relevant
- No impact



- Large target group or deep impact on small group

- Not well structured
- No proof of concept
- No clear explanation
- Bad performance



- Very well structured
- Clear proof of concept
- Very clear explanation
- Excellent performance

